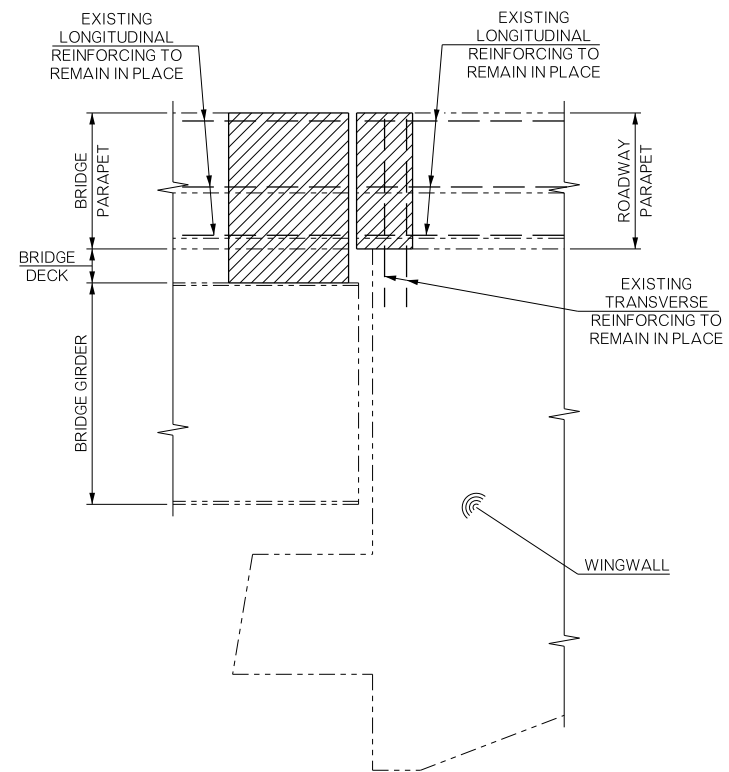
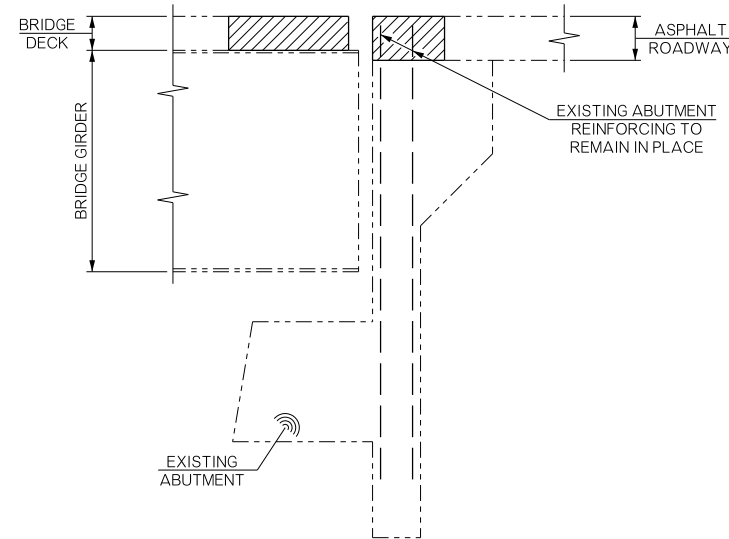


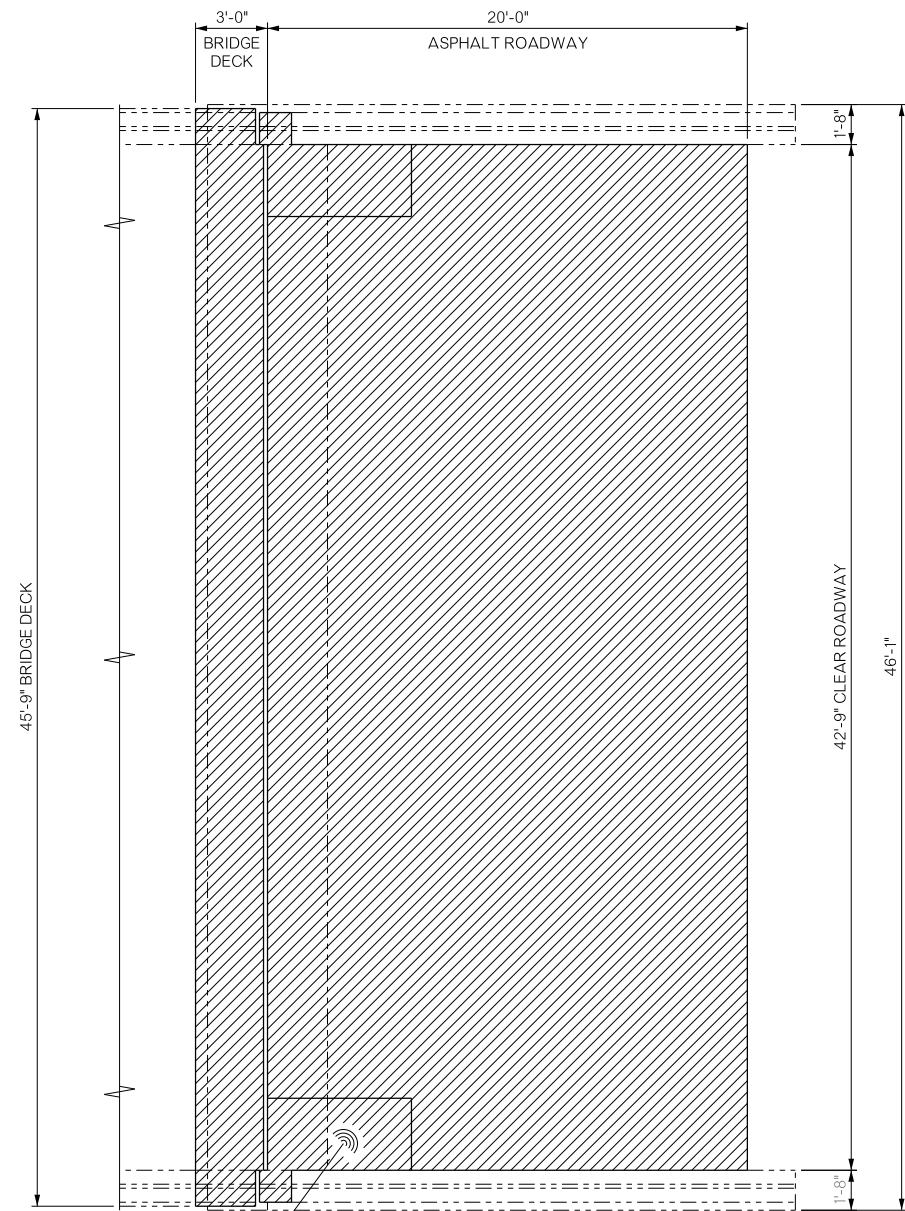
REVISIONS		
REV. NO.	DESCRIPTION	DATE



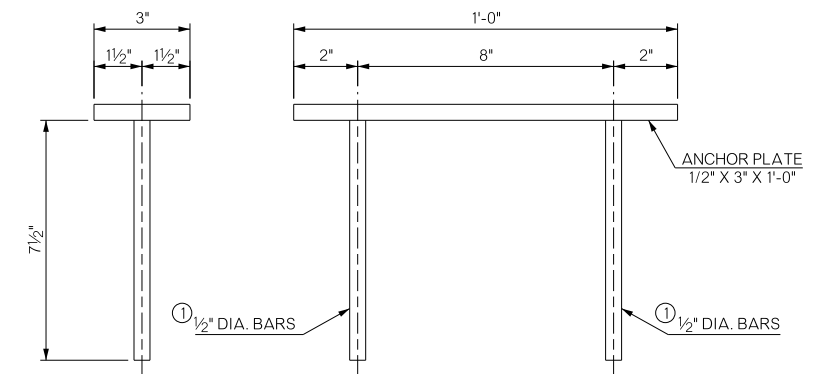
**EXISTING ELEVATION
AT WINGWALLS**
HATCH AREA TO
BE REMOVED



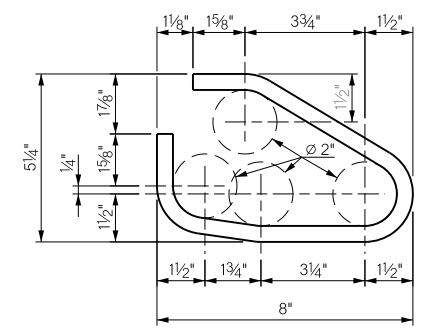
**EXISTING ELEVATION
BETWEEN WINGWALLS**
(HATCH AREA TO
BE REMOVED)



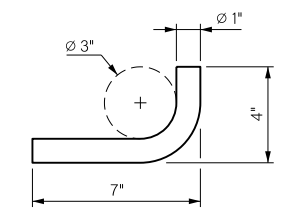
PLAN OF REMOVAL
HATCH AREA TO
BE REMOVED



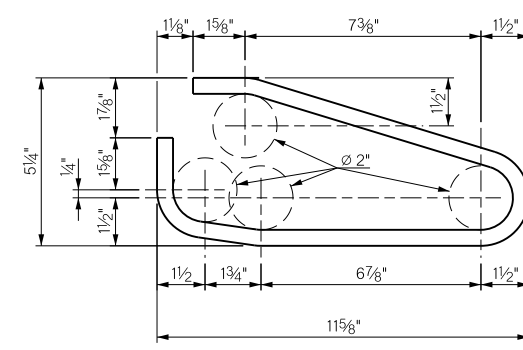
ANCHOR ASSEMBLY
(6 REQUIRED, AT
EACH ABUTMENT)



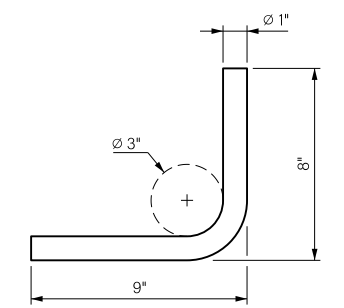
W1 ANCHOR BAR DETAIL



L1 BAR



W2 ANCHOR BAR DETAIL



L2 BAR

NOTE:
W1 AND W2 BARS SHALL BE FABRICATED
FROM W-20 DEFORMED STEEL WIRE.

BRIDGE "A" US-81 OVER UP RAILROAD REPAIR BRIDGE ITEM (TYPE A) EXPANSION JOINT REPLACEMENT AT ABUTMENTS (SHEET 1 OF 2)	GRADY COUNTY	Design: MLC 04/16
		Detail: GLB 04/16
		Check: DAH 04/16
		Squad: HARJO
		Engr: MOLLA-ESMAIL
STATE OF OKLAHOMA	DEPARTMENT OF TRANSPORTATION	
JOB/PIECE NO. 31701(04)		SHEET NO. B003